

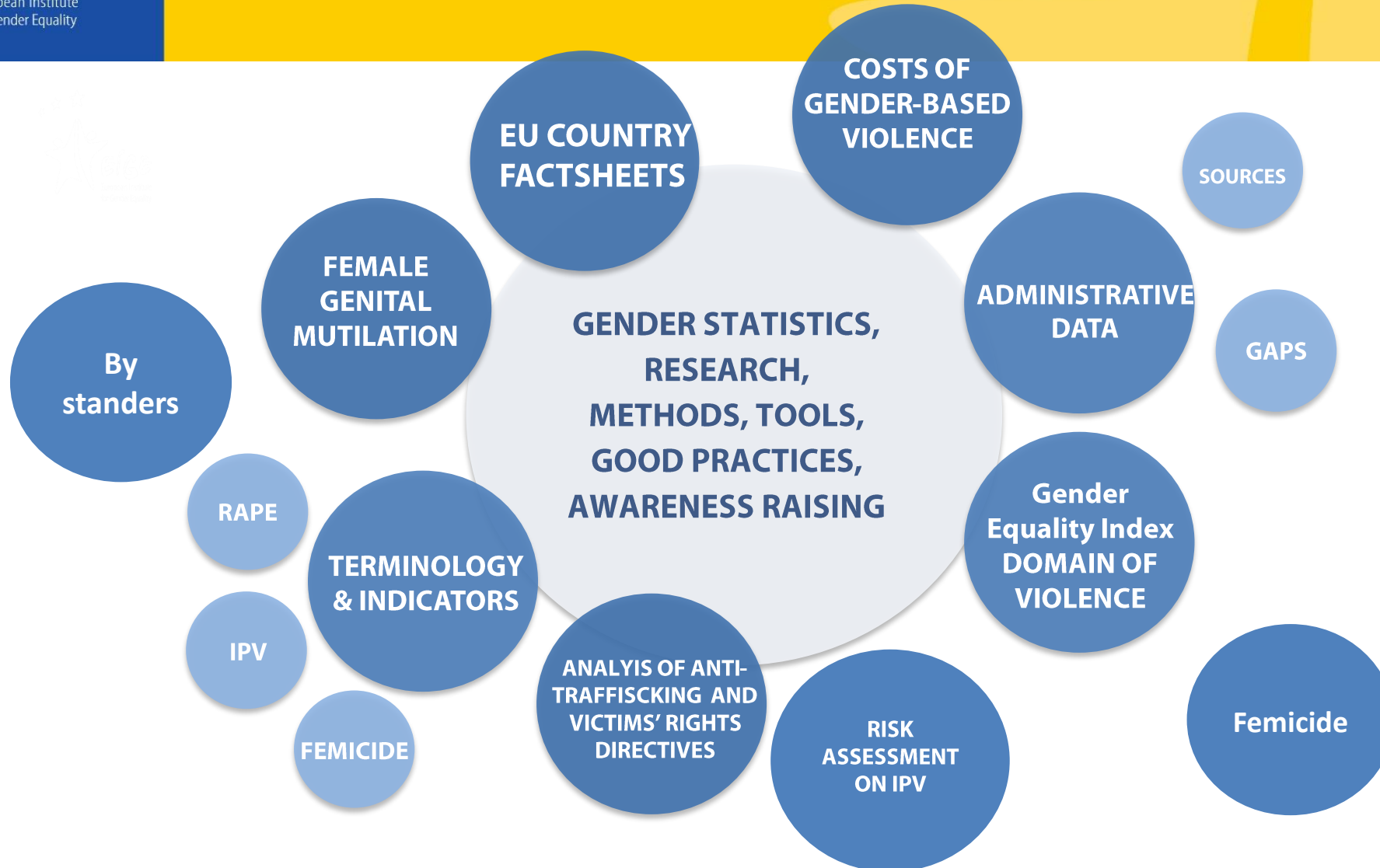


Risk Assessment by Police of Intimate Partner Violence

Vasiliki Saini

17 12 2018

EIGE's work on gender-based violence



International framework: need for harmonised reporting



Risk assessment and risk management of Intimate Partner Violence

Risk assessment is defined as an assessment of the lethality risk, the seriousness of the situation and the risk of repeated violence, including access to firearms (Istanbul Convention)

Risk management is generally defined as the response to the risk identification and assessment to ensure the prevention of risk, involving different strategies and a multiagency approach (Istanbul Convention)

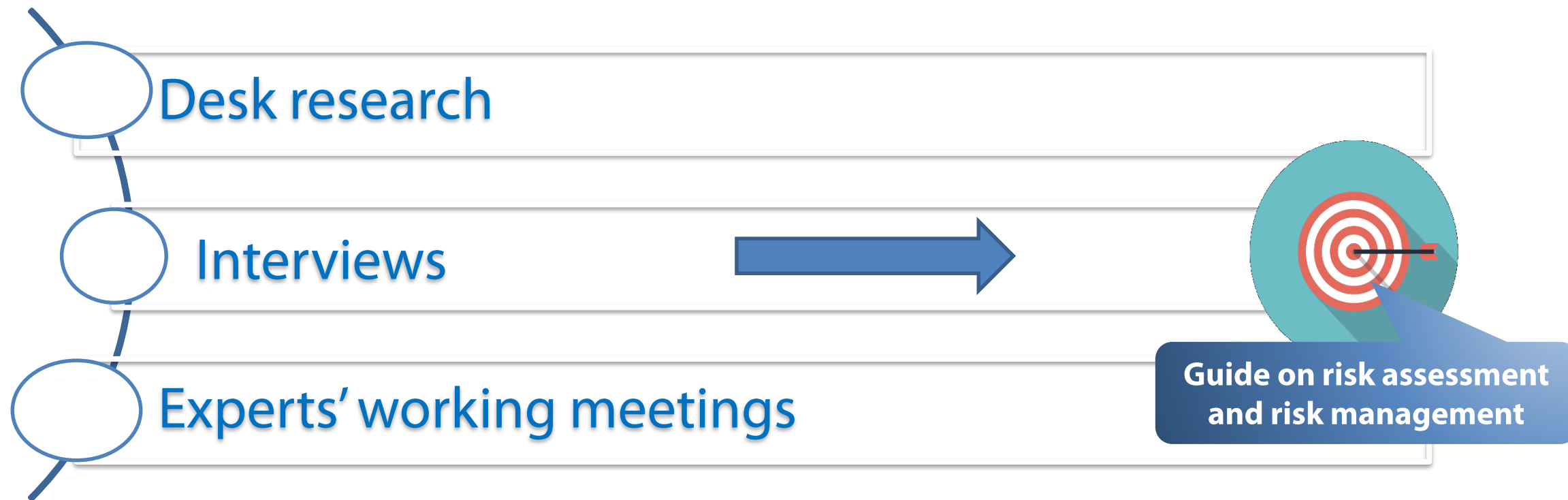


Goal



- **Improvement of institutional response in combating violence against women in EU by Member States**
- **Better protection of women from further victimization**

Research components



Preliminary findings

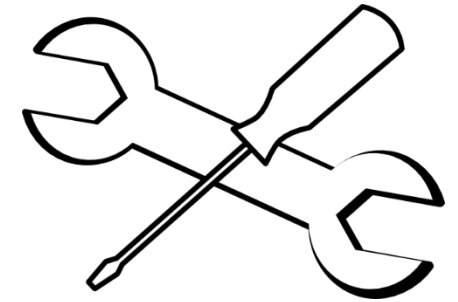
Risk Assessment

- Risk assessment process: Police and Law enforcement agencies
- Gender elements: absent from risk assessment and risk management practices in MS's
- Need for specialised training
- Children's experiences of intimate partner violence are not reflected
- Multiple vulnerabilities and intersectional categories are not sufficiently taken into account

Preliminary findings

Tools

- Diversity across EU Member States
- Limited evidence of the effectiveness
- Moderate predictive validity
- Psychological abuse is largely absent from standardized tools



Preliminary findings

Risk Management

- Strategies: eg. protection and restraining orders
- Victims fail to receive protection orders because of the cost
- Restricted knowledge: safety plans-safety of the victim from future violence
- Limited efficacy of perpetrators treatment programmes

Challenges

- Gendered legal and policy framework
- Victim-centred approach to risk assessment
- Estimating coercive control
- Intersectional approach
- Wellbeing of victims of intimate partner violence
- Child competent risk assessment
- Police training

Next steps

Experts working groups

- 30 January 2019
- **Guide on Risk Assessment and Management of Intimate Partner Violence against Women, for Police**



Connect with us!



eige.europa.eu



[facebook.com/
eige.europa.eu](https://facebook.com/eige.europa.eu)



[twitter.com/
eurogender](https://twitter.com/eurogender)



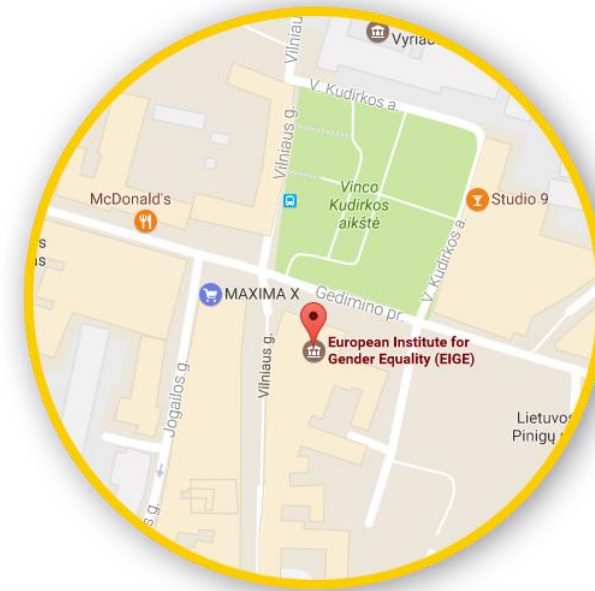
[eige.europa.eu/
newsletter](http://eige.europa.eu/newsletter)



[eurogender.eige.
europa.eu](http://eurogender.eige.europa.eu)



[youtube.com/
user/eurogender](https://youtube.com/user/eurogender)



**Gedimino pr. 16,
LT-01103 Vilnius,
Lithuania**